



VERTIC

**BATILIGNE**



## HORIZONTAL LIFELINE SYSTEM

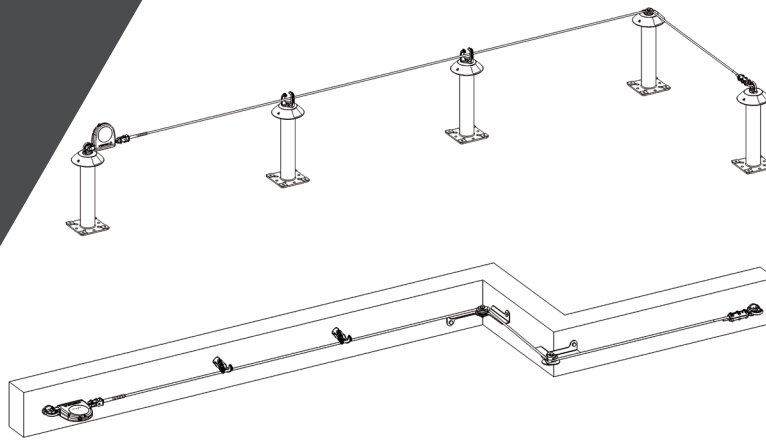


- ✓ Can be used **without any carriage**, with only a **single carabiner**
- ✓ Easy access through intermediate brackets **without unclipping**
- ✓ Maximum span between 2 supports is **certified up to 33 ft (10m)**
- ✓ Tension control indicator enables an **optimum adjustment of the wire rope**
- ✓ **Ease of installation**, swadgeless or crimped ends
- ✓ Stainless steel components, **corrosion resistant**

VERTIC INC - 1751 WENTWORTH STREET UNIT 16 - WHITBY, ONTARIO - L1N 8V5

TF. 844-667-SAFE (7233)  
T. 905-434-SAFE (7233)  
Fax. 905-434-8606

info@vertic.ca  
www.vertic.ca



## SAFETY WITHOUT UNCLIPPING

While the operator is clipped on the lifeline system, he can go through the intermediate brackets without unclipping.

A single carabiner enables the operator to work in an optimum position in relation to the lifeline.



### BATILIGNE KIT

The BATILIGNE system is also available in a **READY-TO-INSTALL KIT**.

Lengths available : **49.21 ft (15m)**, **98.43 ft (30m)** or **131.23 ft (40m)**.



## BATILIGNE® COMPONENTS

### Energy shock absorber

Installed at end of the lifeline, it reduces the loads applied to the structure.



ABS55

ES-2

### Crimped end with articulated shackle

End part of a lifeline to crimp the wire rope.



### Intermediate bracket

Spaced at 33 ft (15m) maximum.  
The carabiner passes through the intermediate bracket without unclipping.

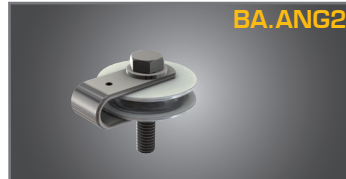


BA.INT2

BA.ANG2

### Corner bracket

Can be installed on facade with the specific wall support BA.ANGSA.



### Swadgeless end

The swadgeless connector enables termination of the wire rope without specific tools.



BA.EXT2

BA.ANGSA

### Corner support for facade

Enables corner bracket to be installed on acute or obtuse corners.  
Adjustable depending on the degree of angle.



### Eyelet tensioner

Enables the tension adjustment of a lifeline to 110 lbs (50 kg). Includes a tension indicator. Swadgeless assembling, without any specific tools.



BA.TSL2-50

C18

### Wire rope

5/16" (8mm), 7x7 stainless steel cable.  
VERTIC Bolduc incorporated in the core of the wire rope for quality control and traceability.



### Crimped tensioner

Allows to adjust the pretension of the lifeline to 110 lbs (50kg).

Prevent over tensioning of the lifeline.



BA.TSL3-50

PS

### Safety sign

Must be installed at the access of the system.

Provides identification and control of the system.



VERTIC INC - 1751 WENTWORTH STREET UNIT 16 - WHITBY, ONTARIO - L1N 8V5

TF. 844-667-SAFE (7233)  
T. 905-434-SAFE (7233)  
Fax. 905-434-8606

info@vertic.ca  
www.vertic.ca